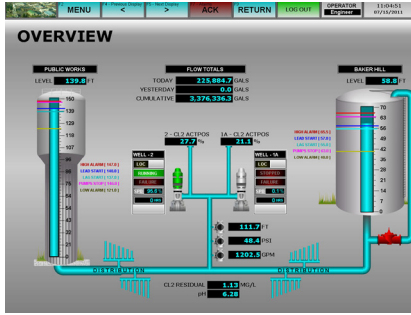


Automated Reporting: Regulatory Requirements

Parametrix



Regulatory Requirements

EPA groundwater rules specify continuous monitoring and reporting of data. Local, state, and county regulations now also include the mandate to meet the new standard. Parametrix can help you comply with these regulations. We design and implement systems to provide the data necessary to meet these new regulations, often using equipment already installed. Our approach offers remote access to control systems for monitoring, collection, storage, and display of key operating values and provides both customized and standard reports.

Ground Water Rule Compliance Monitoring: A Quick Reference Guide

Overview of the Rule

Title	Ground Water Rule (GWR) 71 FR 65574, November 8, 2006
Operation	71 FR 65577, November 21, 2006, 71 FR 65578, November 21, 2006
Purpose	Reduce the risk of illness caused by microbial contaminants in groundwater.
General Description	The GWR establishes a risk-targeted approach to local contamination and remediation and address.
Utilities Covered	The GWR applies to public water utilities, including those that provide groundwater treatment, and to those groundwater monitoring systems that monitor the direct influence of surface water prior to treatment.

Purpose of Compliance Monitoring

- Compliance monitoring ensures that GWSS that provide at least 4-log treatment of viruses using chemical disinfection, membrane filtration, or a State-approved alternative treatment technology are consistently and effectively achieving this level of treatment.

When is Compliance Monitoring Required?

- GWSS that provide at least 4-log treatment of viruses as a corrective action must conduct compliance monitoring.
- GWSS that provide at least 4-log treatment of viruses at or before the first customer treatment using chemical disinfection, membrane filtration, or a State-approved alternative treatment technology and do not conduct GWR triggered source water monitoring must notify their State in writing that they provide treatment and begin compliance monitoring.
- The compliance dates for systems that provide 4-log treatment in lieu of GWR triggered source water monitoring are as follows:
 - GWSS with existing ground water sources must notify the State by December 11, 2009, that they provide at least 4-log treatment of viruses and begin compliance monitoring.
 - GWSS with new ground water sources placed into service after November 30, 2009, must notify the State that they provide at least 4-log treatment of viruses and begin compliance monitoring within 30 days.

What are the Compliance Monitoring Requirements for Chemical Disinfection?

- GWSS Serving 3,300 or Fewer
 - GWSS using chemical disinfection and serving 3,300 or fewer persons must monitor for the residual disinfectant concentration and meet the State specified minimum concentration at or before the first customer.
 - GWSS must monitor on a daily basis and collect a grab sample during the hour of peak flow or at another time specified by the State.
 - If any daily grab sample is less than the minimum disinfectant residual concentration, the system must take follow-up samples every four hours until the residual meets or exceeds the State-specified minimum concentration.
 - These systems also have the option to monitor continuously.
 - If the GWSS monitors continuously, the system must meet the monitoring requirements for GWSS serving greater than 3,300 persons (see below).
- GWSS must monitor at a State-approved location.

System Type	Monitor For	Frequency	Sample Location
GWSS serving less than 3,300 using chemical disinfection	Residual disinfectant concentration (must meet State minimum)	Daily or continuous	State-approved location(s)
GWSS serving greater than 3,300 using chemical disinfection		Continuous only	



GROUNDWATER TREATMENT PLANT REPORT				Washington State Department of Health						
City of Peace		Month/Year: June, 2010								
King County	ID No. AAAAAA	Report submitted by: John Doe								
Wells: East, West, South		Source # 07		Operator Certification #: XXXXX						
DOH Water Quality Parameter Requirements:				Signature:						
pH: minimum 7.0		Cl: Residual: minimum 2.5 mg/L		Telephone #: YYY-XXX-XXXX						
Day	Water Production (1,000 Gals)		Raw Water Quality			Chemicals Used (indicate units)			Treated Water Quality	
	Meter Reading	Total Treated Water to System	Temp C	pH	Other	Cl ₂ (lbs.)	NaOH (lbs.)	Ph Daily Value	Cl ₂ Residual at Test Site (mg/L)	Notes
6/1/2010	31,564	451	11.33	6.53			88.99	7.53	2.63	
6/2/2010	32,015	443	11.34	6.58			6.20	7.58	2.88	
6/3/2010	32,458	206	11.36	6.70			624.23	7.70	2.77	
6/4/2010	32,665	425	11.39	6.66			419.89	7.66	2.79	
6/5/2010	33,089	448	11.40	6.04			-9.89	7.04	3.58	
6/6/2010	33,537	0	11.39	6.19			15.93	7.19	3.94	

Sample report automatically generated to meet EPA requirements

Clients using our automated reporting include:

- Municipal water systems
- Water utility companies
- Major port facilities

Control System Requirements

- Control system (PLC, DCS, or computer) to electronically monitor the points required for reporting
- Computer to store the data for the report timeframe
- Report writing program to gather the data, perform calculations, and store the report results for retrieval

If your system does not meet these control system requirements, we can help you determine the simplest path forward to comply with the regulations.

How Parametrix Can Help with Your Reporting Requirements?

Parametrix offers a full suite of electrical and controls design services for remote control and monitoring of processes such as water reservoirs, booster pump stations, lift stations, wastewater treatment facilities, standby generation, and other industrial facilities. As an integrated part of our client's team, our field services include PLC and HMI design, programming, maintenance, and troubleshooting.

Parametrix

info@parametrix.com
253.604.6600

